

**ST. ANTHONY'S SR. SEC. SCHOOL**

**(2021-2022)**

**EXTRA QUESTIONS**

**CLASS - 3**

**MATHEMATICS**

**NOTE: Make a Mathematics practice copy and do the given work in it.**

**CHAPTER -2 : 4 – DIGIT NUMBERS**

**Q1) Fill in the blanks:**

(a) The smallest four digit number is \_\_\_\_\_

(b) The largest one digit number is \_\_\_\_\_

(c) The smallest two digit number is \_\_\_\_\_

(d) The largest three digit number is \_\_\_\_\_

(e) The largest four digit number is \_\_\_\_\_

**Q2) Write the following numbers in words:**

(a) 256

(b) 3004

(c) 9998

(d) 1230

(e) 5087

**Q3) Write the following in standard form:**

(a) 7 thousands + 3 hundreds + 8 tens + 4 ones = \_\_\_\_\_

(b) 5 thousands + 2 hundreds + 9 ones = \_\_\_\_\_

(c) 9 thousands + 2 tens = \_\_\_\_\_

(d) 2 thousands + 7 tens + 5 ones = \_\_\_\_\_

**Q4) Write the following numbers in expanded form:**

(a) 4234

(b) 9999

(c) 8231

(d) 5070

Q5) Write the place value of underlined digits:

(a) 4567 - \_\_\_\_\_

(b) 9238 - \_\_\_\_\_

(c) 6230 - \_\_\_\_\_

(d) 5064 - \_\_\_\_\_

Q6) Write the face value of underlined digits:

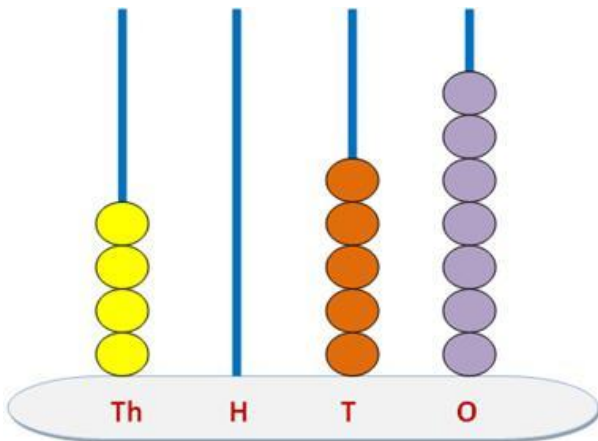
(a) 8234 - \_\_\_\_\_

(b) 6572 - \_\_\_\_\_

(c) 9308 - \_\_\_\_\_

(d) 1506 - \_\_\_\_\_

Q7) Write the number shown on the abacus in all forms:

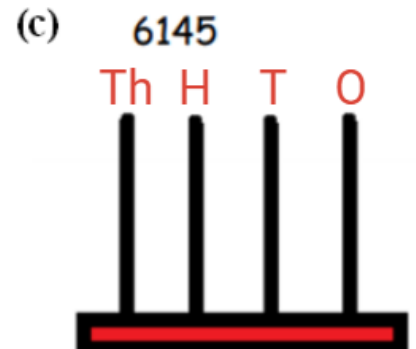
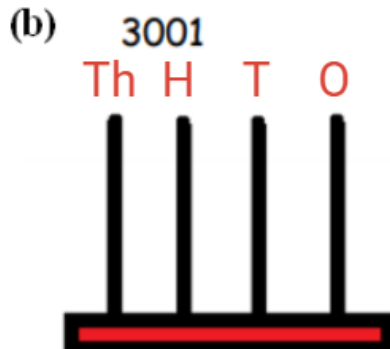
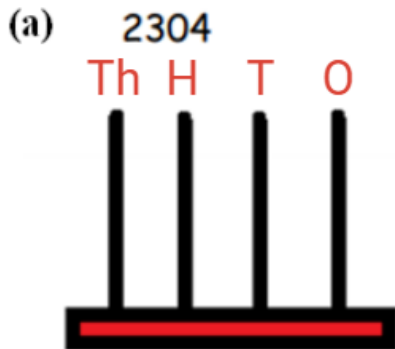


Standard form: \_\_\_\_\_

Word form: \_\_\_\_\_

Expanded form: \_\_\_\_\_

Q8) Represent the following numbers on the abacus.



**Q9) Fill in the missing numbers in the number grids.**

**(a) 5475 to 5094**

<b>5475</b>				
	<b>5481</b>			
			<b>5488</b>	
		<b>5492</b>		

**(b) 1110 to 1124**

<b>1110</b>				
				<b>1119</b>
	<b>1121</b>			